



DOWNTOWN  
RESIDENCY

*@Dhapakhel*









## ABOUT US

### PLAN. DESIGN. BUILD.

AT DOWNTOWN, WE AIM AT IMPROVING THE LIVING STANDARDS OF ALL THOSE LIVES WE TOUCH. DOWNTOWN HOUSING COMPANY IS A LEADING PROPERTY DEVELOPMENT COMPANY IN NEPAL. IN THE TWO DECADES SINCE ITS ESTABLISHMENT, DOWNTOWN HOUSING HAS SPECIALIZED IN THE DEVELOPMENT OF RESIDENTIAL HIGH-RISE BUILDINGS TO LUXURY INDIVIDUAL BUNGALOWS. OUR GOAL IS TO MAINTAIN A HIGH STANDARD OF LIVING FOR OUR CLIENTS WHILE DEVELOPING INNOVATIVE SMART HOMES FOR SUSTAINABILITY, EFFICIENCY AND CONTRIBUTING TO A PLANNED URBANIZATION OF OUR CITIES.









## AN EXCLUSIVE AREA

ENJOY THE MOST AFFLUENT SUBURB OF LALITPUR CITY. CONVENIENTLY AT DHAPAKHEL, SOUTHEAST OF LALITPUR, 4.8KMS FROM THE MAJOR CITY, THE HOUSING OFFERS A FULLY SELF CONTAINED LUXURIOUS ABODE IN A VERY CLOSE PROXIMITY TO NATURE AS WELL AS MAIN CITIES. WHETHER FOR BUSINESS OR LEISURE, THIS AREA HAS EVERYTHING TO OFFER: MAJOR BUSINESSES, EDUCATION INSTITUTIONS AND HOSPITALS.

### PROJECT HIGHLIGHTS

AREA DETAILS  
LUXURY BUNGLOWS  
TERRACE APARTMENTS

80+ ROPANIES  
100+ UNITS  
50+ UNITS

COMMUNITY HALL, HEALTH CLUB AND PANORAMIC VIEW  
DAZZLING SWIMMING POOL WITH CASCADE GREENARY AND AMPLE SPACE  
24/7 SECURITY WITH SURVEILLANCE AND COFFEE SHOP  
ELECTRIC VEHICLE CHARGING STATION AND PROVISION FOR CAR WASH

### HOUSE TYPES

TYPE F/F-MAX  
TYPE M  
TYPE S

2550sq.ft./2746sq.ft.  
2460sq.ft.  
2205sq.ft.



Type S



Ground Floor



First Floor



**Type S**



**Second Floor**



**Roof Plan**

**Type M**



**Ground Floor**



**First Floor**



**Type M**



**Second Floor**



**Roof Plan**

**Type F/F-Max**



**Basement**



**Ground Floor**



**Type F/F-Max**



**First Floor**



**Second Floor**



Roof Plan





# Type S



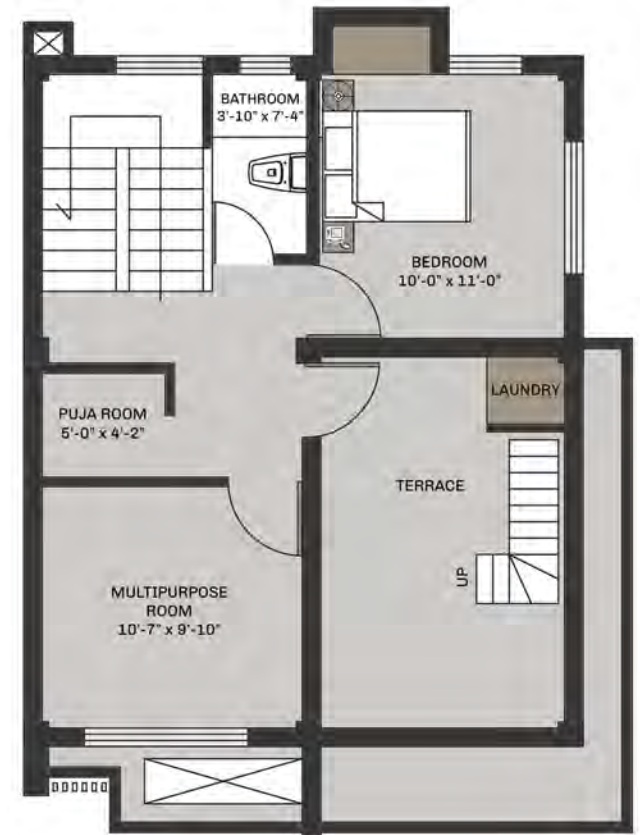
## Ground Floor

Area: 709.94 sq.ft.



## First Floor

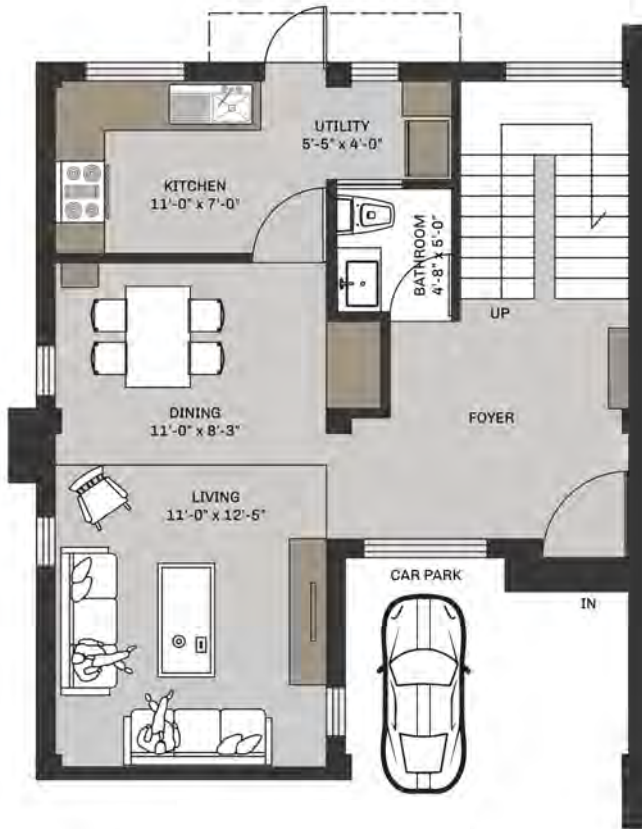
Area: 760.17 sq.ft.



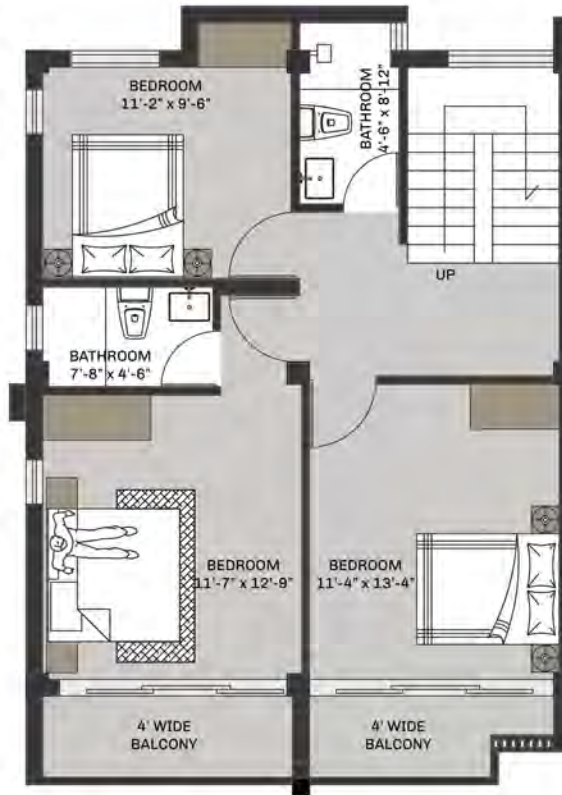
## Second Floor

Area: 735.38 sq.ft.

# Type M

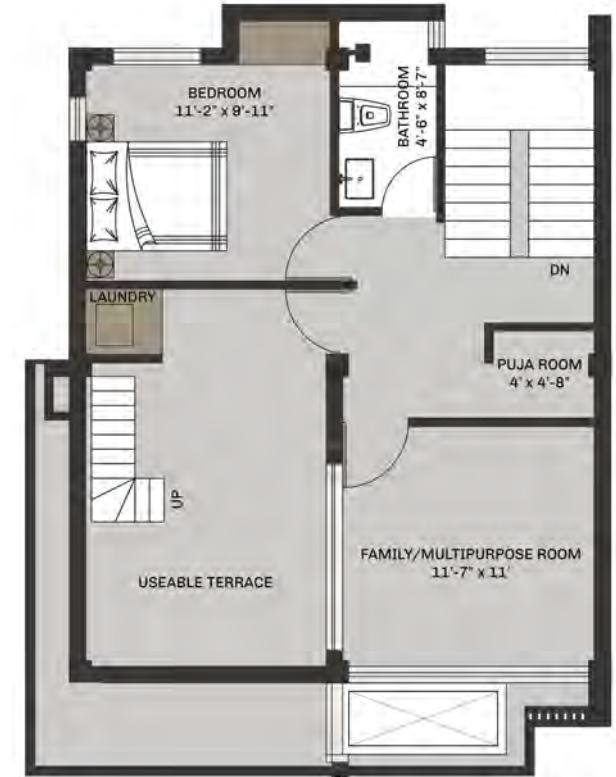


**Ground Floor**



**First Floor**

Area: 863.05 sq.ft.

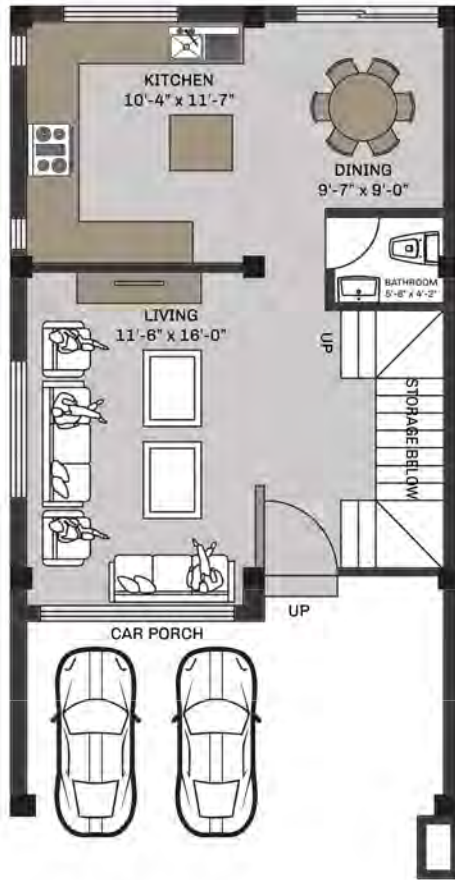


**Second Floor**

Area: 833.14 sq.ft.

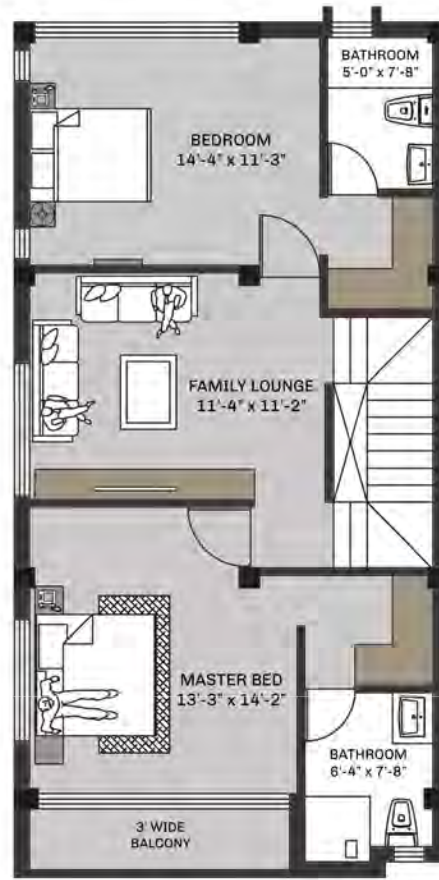


## Type F/F-Max



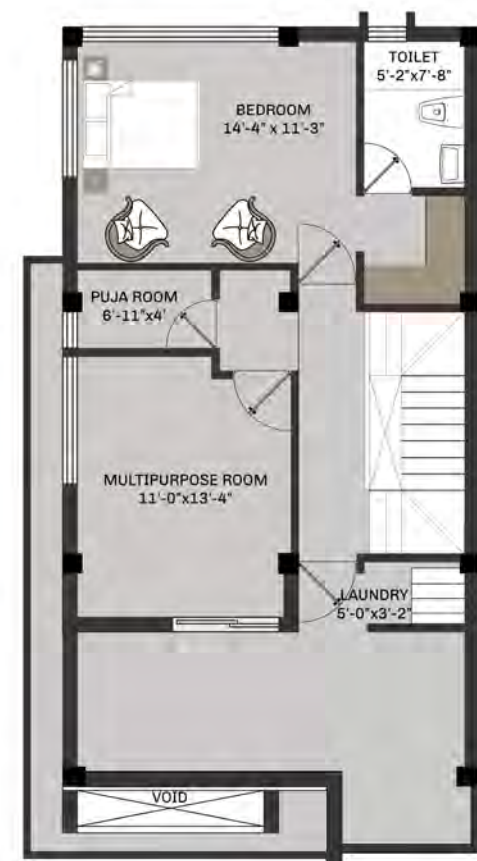
### Ground Floor

Area: 833.77 sq.ft.



### First Floor

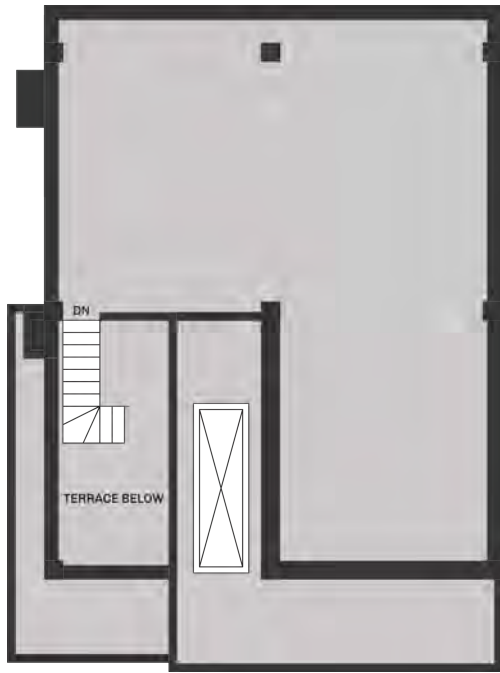
Area: 859.62 sq.ft.



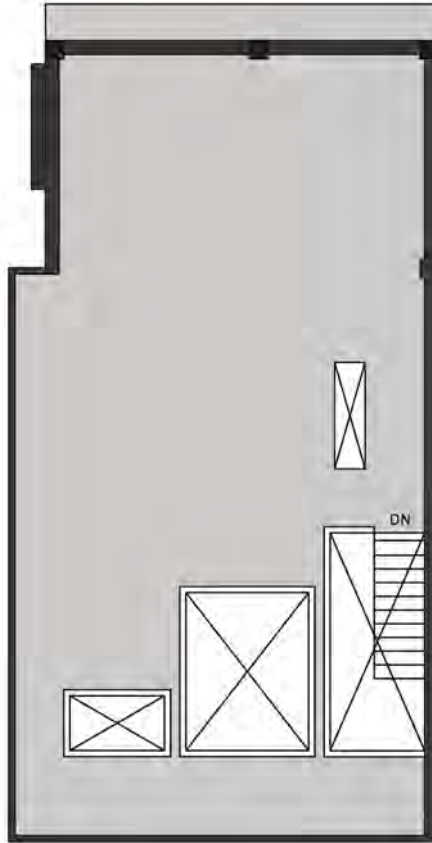
### Second Floor

Area: 859.71 sq.ft.

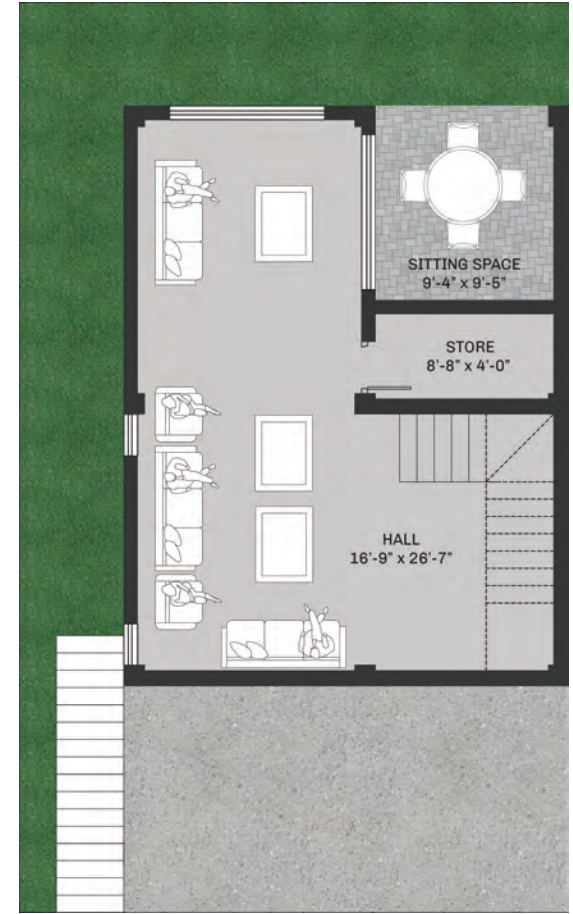
Roof/Basement



Type S/M



Type F/F-Max

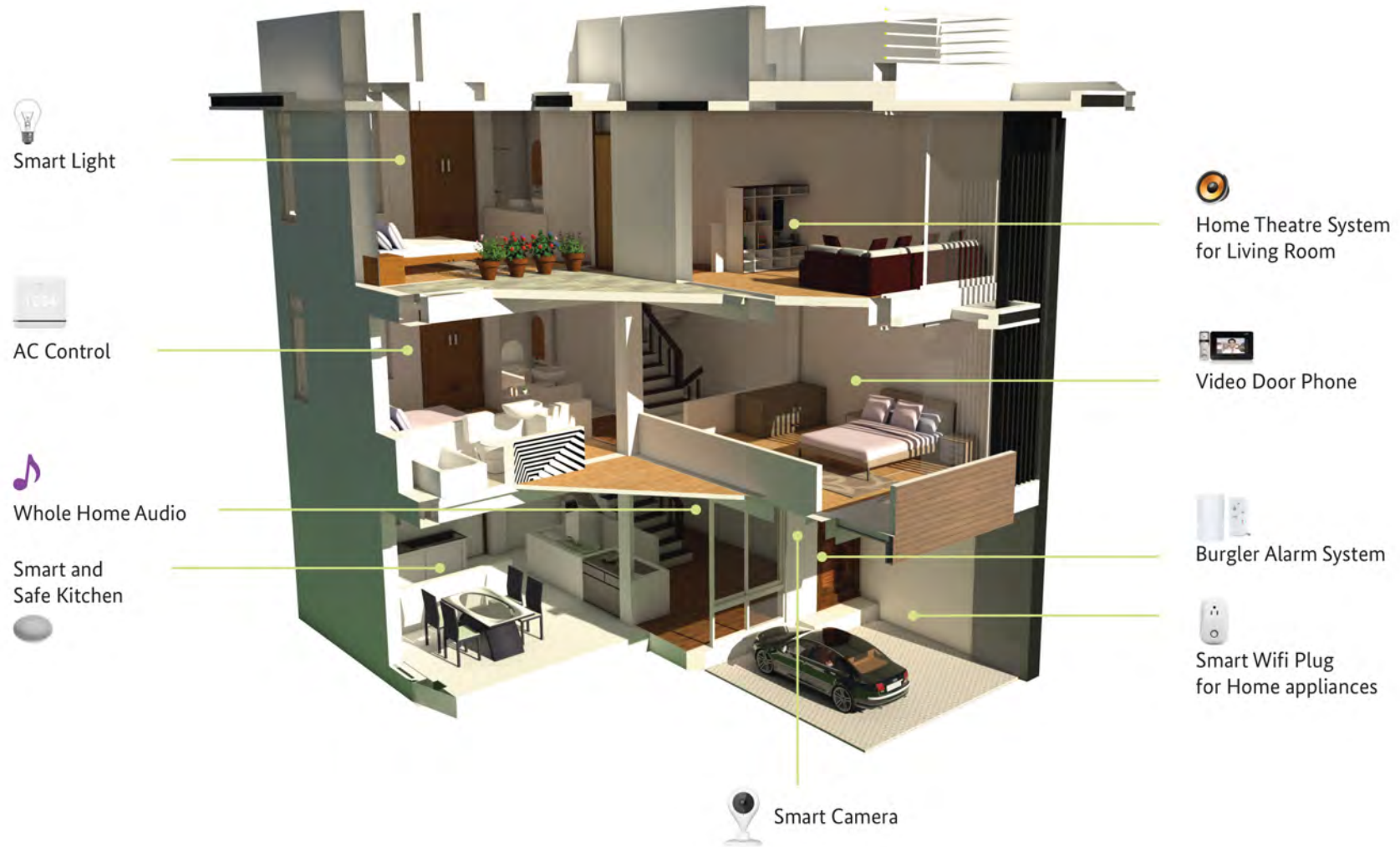


Basement (Type F-Max)

Area: 192.91 sq.ft.



# SMART HOME FEATURES



NOTE : The smart home features are optional according to client's requirement.

## FEATURES

### PROJECT FEATURE

Swimming Pool  
Table Tennis  
Coffee Shop  
Community/Meeting hall  
Community Office  
Health Club  
Water Treatment Plant  
Individual Sewage Treatment Plant  
Interlocking block on roads  
CCTV to cover entire premises  
24/7 Guards  
Guest parking areas  
Solar Panel Back up  
Property Management by Developer  
Electric Car Charging station  
Car Wash

### INDIVIDUAL HOME FEATURE

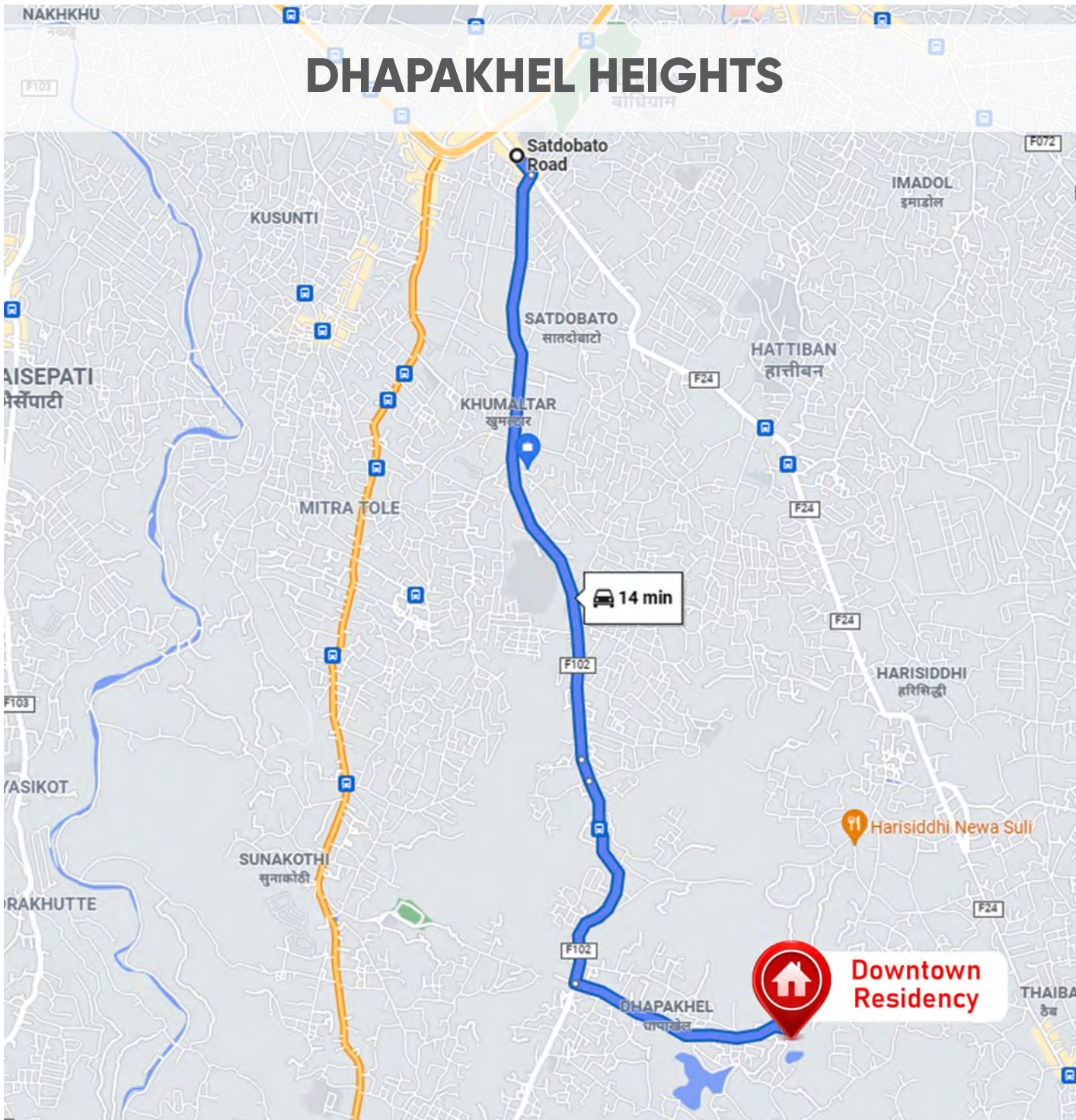
Rooftop Gazebo  
Heat pump  
Kitchen by Kitchen Concept  
Smart home features  
Video Door Phone  
Sewage treatment plant  
Ground water tank  
Rooftop water tank  
Car Parking x1  
Bike Parking x1  
Laminate flooring in all rooms and lobby  
Wooden plank on Staircase tread  
Shower enclosures in all bathrooms  
Tile flooring in all balconies and terraces  
Granite on all window sill  
Double glazed UPVC windows (except small windows)











**AN  
EXCLUSIVE  
LOCATION**



# RAISING YOUR 'STANDARD OF LIVING'

DTHOUSING.COM | (977) 5275022/70

**DOWNTOWN HOUSING COMPANY**



All residential units have an A rated Energy efficiency pre-certificate, according to the regulations of Government of Nepal. All plans, features and amenities depicted herein are based upon preliminary development plans, and are subject to change. All images and designs depicted herein are artist's conceptual renderings, which are based upon preliminary development plans, and are subject to change. All such materials are shown solely for illustrative purposes. Furnishings are only included for illustration purposes and are not included in each units. The project graphics, renderings and text provided herein are copyrighted works. All rights reserved. Unauthorized reproduction, display or other dissemination of such materials is strictly prohibited and constitutes copyright infringement.